



# (PALS)TILLICUM CREEK WATERSHED RESTORATION PROJECT

<b>Project Type</b>	Integrated forest health project
<b>Lead Implementer</b>	U.S. Forest Service
<b>Other Contributing Organizations</b>	North Central Washington Forest Health Collaborative, Washington State Department of Natural Resources, Yakama Nation: Confederated Tribes and Bands
<b>Primary Contact</b>	Andy Hart (andrew.hart@usda.gov)
<b>Project Stage</b>	Implementation
<b>Duration</b>	2016 - ?

## Integrated forest health project

Activities include small tree thinning, pruning, handpiling, prescribed burning, shaded fuel break construction, closing roads, decommission roads, improve/upgrade roads on the Okanogan-Wenatchee National Forest.

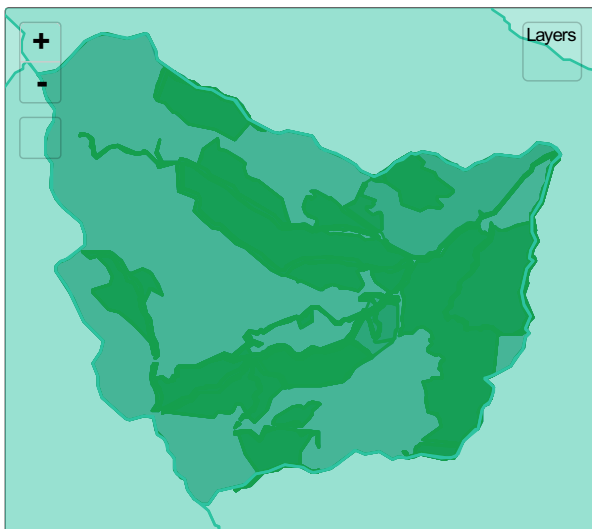
### Project Themes

- HB 1168 Account State-Funded Projects
- Wildfire Mitigation
- Use of Good Neighbor Authority
- Watershed Resilience



Tillicum Landscape Perspective - Annotated

### Location



Photos

Before



Osborne Panoramas from Sugarloaf Peak looking North in 1934 - Outline added



Tillicum Unit 28 Aerial Photo Pre-Treatment

During



Contract crew implementing fuels reduction in the Tillicum project. October 2022.



2022 thinning activity in Tillicum project

After



Tillicum Unit 28 Aerial Photo Post-Treatment



Tillicum Unit 27 Aerial Photo Post Treatment